

685
THIRD
AVE

Floor plans



Availability overview

Partial 27th floor
3,967 RSF

Planned high end prebuilt to feature one conference room, two offices, one huddle room, pantry and open area

Entire 19th floor
19,113 RSF

Whiteboxed full floor

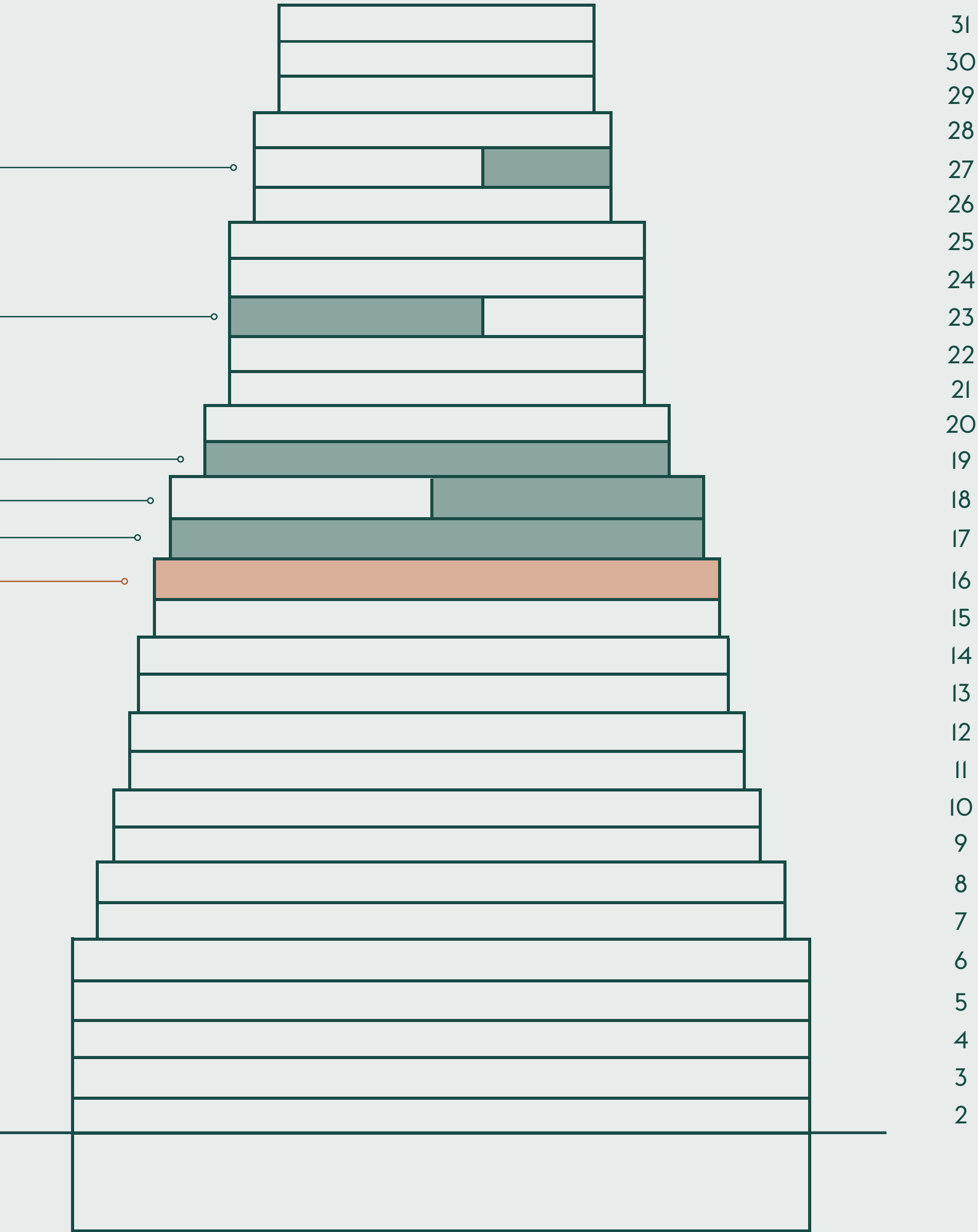
Entire 17th floor
6,912 RSF

Fully furnished high end prebuilt features two conference rooms, two offices, pantry and open area

Partial 23rd floor
10,966 RSF
High end prebuilt features three conference rooms, four offices, two phone booths, pantry and open area

Partial 18th floor
5,720 RSF
Prebuilt pending. Currently built with one conference room, four offices, pantry and open area/training space

Planned Amenity Center



Floor 17

Prebuilt plan

Exec office	1
Private office	1
Workstations	24
Reception	1
Conference	1
Meeting	1
Breakout	1
Pantry	1
Storage room	1
Storage closet	2
IT closet	1
Coat closet	2
Total headcount	27

Key

- Meeting rooms
- Private offices
- Reception
- Core areas
- Elevators



Floor 19

Test fit — office intensive

Exec office	3
Private office	20
Workstations	65
Reception	1
Conference	4
Meeting	2
Pantry	1
IT room	1
Coat closet	4
Storage	1
Total headcount	89

Key

Meeting rooms

Private offices

Reception

Core areas

Elevators



Floor 19

Test fit — open layout

Exec office	1
Private office	6
Workstations	104
Reception	1
Conference	4
Meeting	2
Pantry	1
IT room	1
Coat closet	1
Storage	1
Total headcount	112

Key

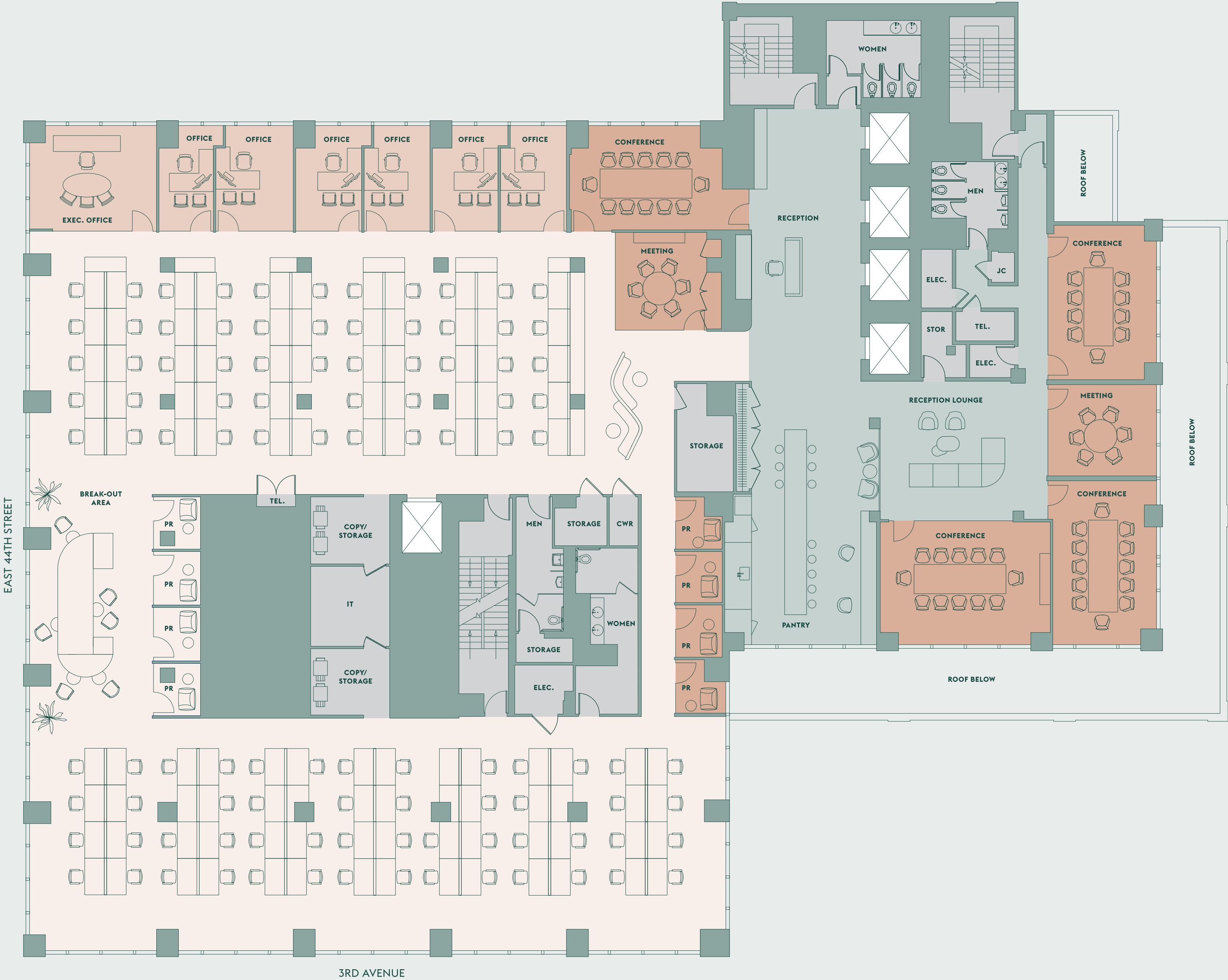
Meeting rooms

Private offices

Reception

Core areas

Elevators



Floor 23

Prebuilt plan



Exec office	1
Private office	3
Workstations	66
Reception	1
Conference	2
Meeting	1
Pantry	1
IT room	1
Coat closet	2
Storage	3
Total headcount	71

Key

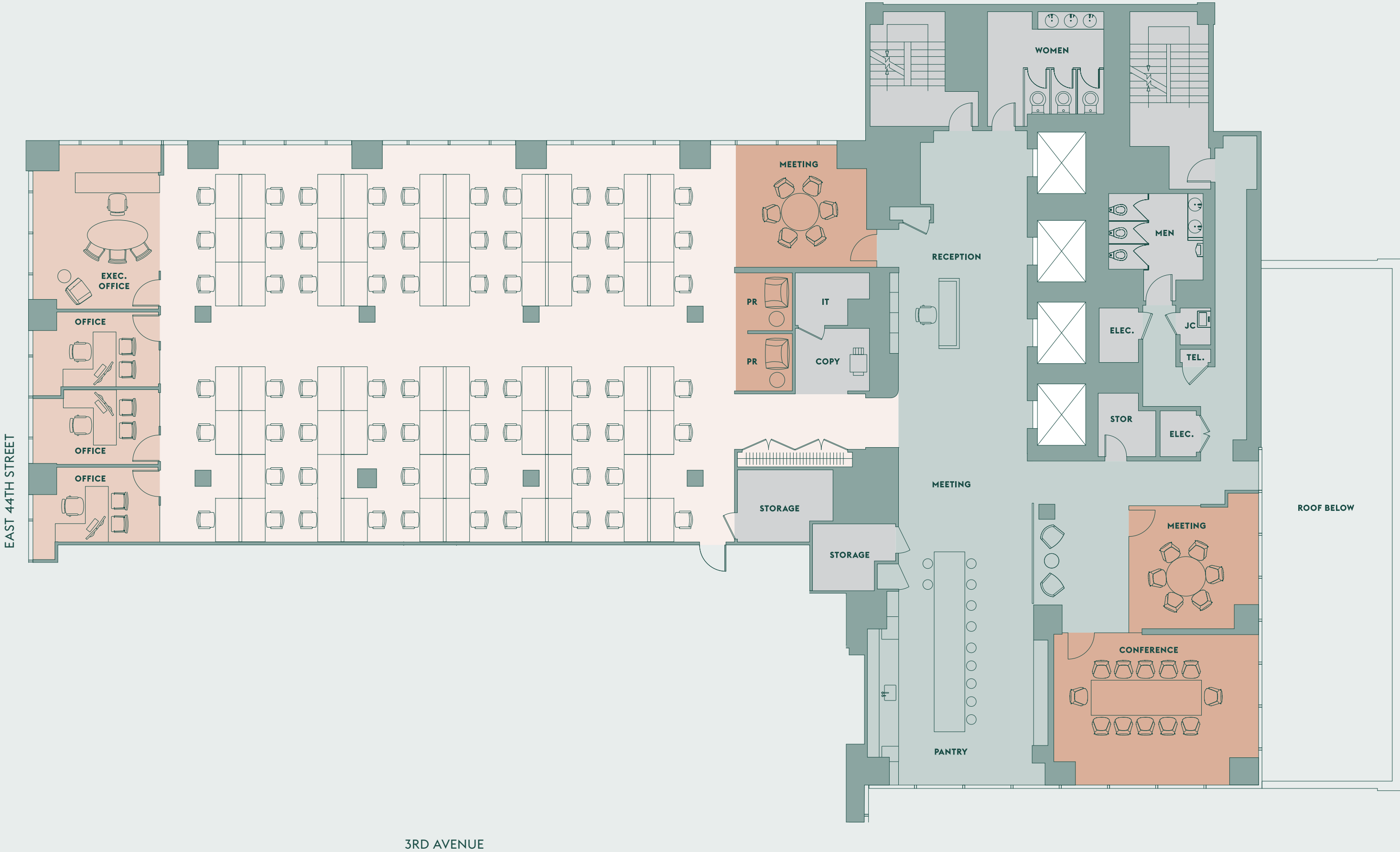
Meeting rooms

Private offices

Reception

Core areas

Elevators



Floor 27

Prebuilt plan



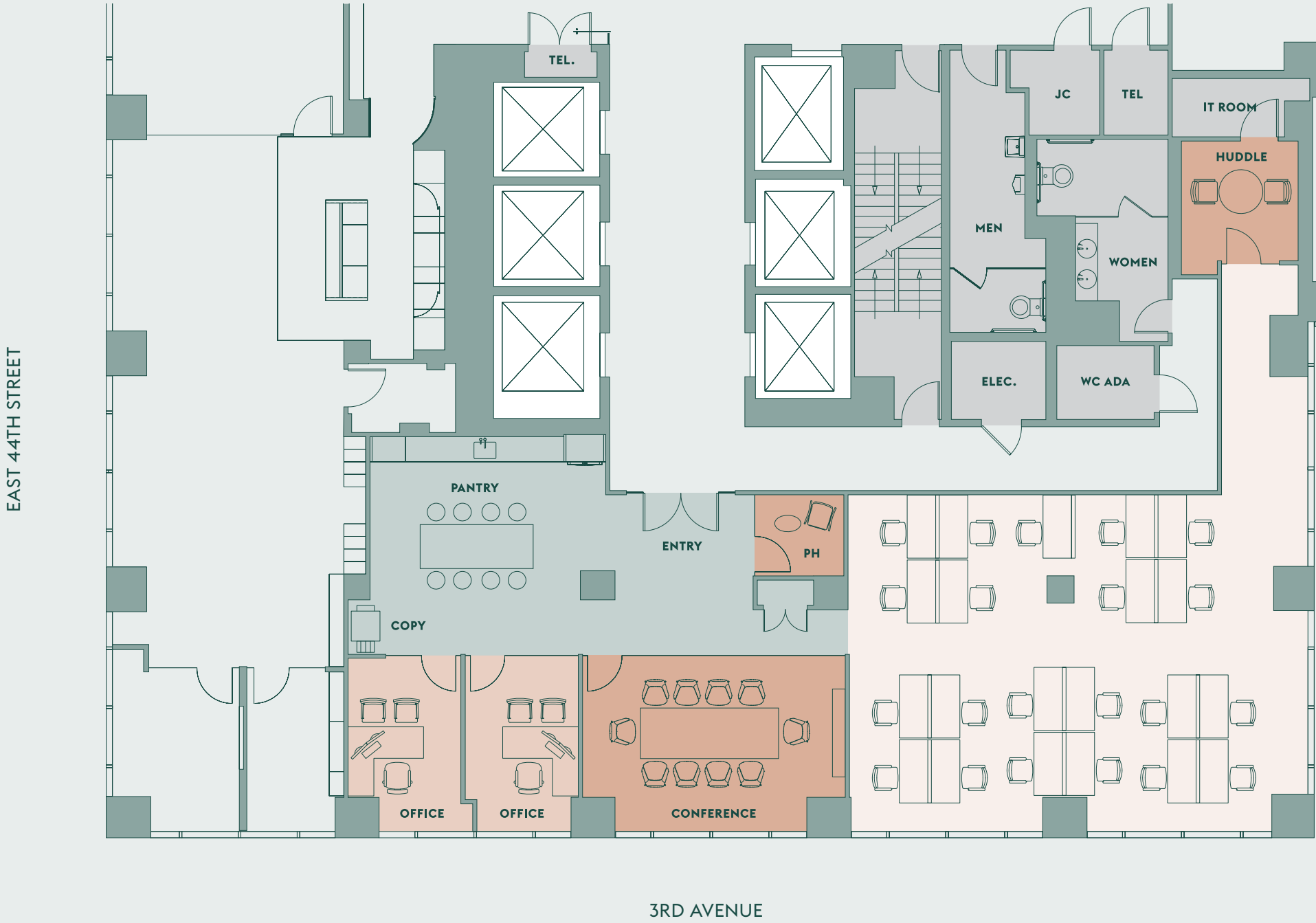
Private office	2
Workstations	21

Conference	1
Huddle room	1
Pantry	1
IT room	1
Coat closet	1

Total headcount23

Key

- Meeting rooms
- Private offices
- Reception
- Core areas
- Elevators



For leasing inquiries,
please contact us



Paul Amrich

(212) 984 8122
paul.amrich@cbre.com

Neil King

(212) 984 8352
neil.king@cbre.com

Meghan Allen

(212) 895 0972
meghan.allen@cbre.com

Anthony Manginelli

(212) 984 8120
anthony.manginelli@cbre.com

**685
THIRD
AVE**